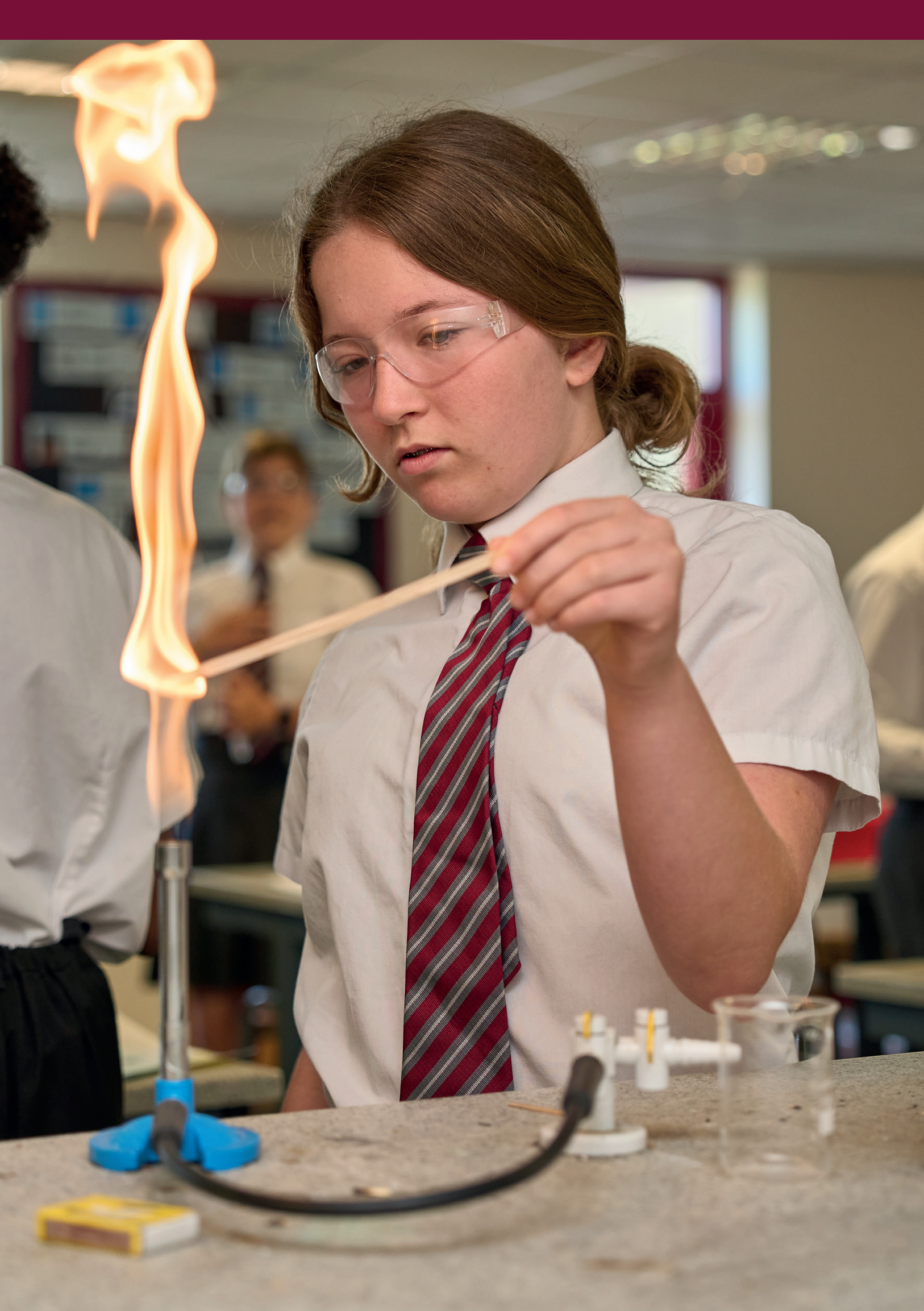




St Katherine's School





A warm welcome to St Katherine's School

A calm and purposeful school with high standards of behaviour built on the collaborative relationships fostered between staff and students.

We are a thriving, diverse school community founded on our core values of respect, responsibility and resilience. We value effort and perseverance, encouraging children to fulfil their potential regardless of their starting point. Our committed staff nurture young people through our

strong pastoral care and our learners achieve highly, finding their way to higher education, apprenticeships and employment opportunities. We believe in treating young people as individuals and encourage their development in the academic, creative, physical, emotional and practical domains.

Our Mission

We are St Katherine's - a nurturing and inclusive community, united in the pursuit of excellence

Our Values

• Respect • Responsibility • Resilience

Why St Katherine's?

Our ambition is for every student to be happy and to thrive at St Katherine's.

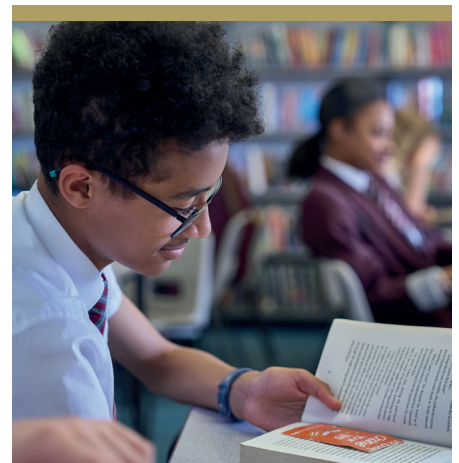
Every student is valued for who they are and what they can become. We celebrate achievement in many forms and value students' positive contributions to school life. With targeted support from teachers who are passionate about learning, we keep a close eye on attainment and progress, and nurture effort, perseverance and self-improvement.

We were delighted to join Cathedral Schools Trust (CST) in January 2019 and this partnership continues to have a very positive impact on our school.

In a semi-rural location, with a bespoke school bus service, excellent public transport links and just minutes by car from the Clifton Suspension Bridge, St Katherine's School offers a calm learning environment free from the bustle and distraction of the city.

“St Katherine's brings **my passions to life**. Teachers always try their best to help and I love the **beautiful environment** and **positive atmosphere** around the school.”

Year 7 student







Starting at St Katherine's

Moving from primary to secondary is an exciting opportunity for growth and personal development. We understand that change can evoke mixed emotions and strive to ensure that every child feels supported and understood as they join St Katherine's.

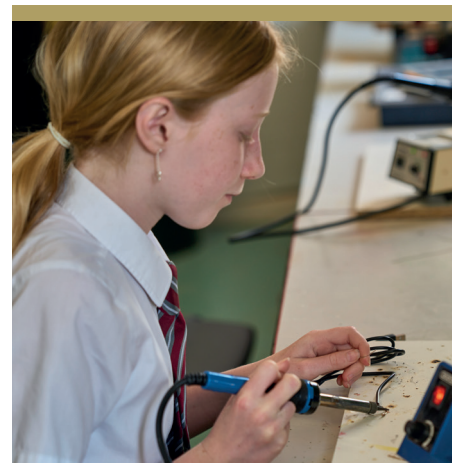
Year 6 students join us for a two day induction where they enjoy taster lessons, form friendships and get to know the school environment before the summer break. Parents and carers join us on one of the evenings to meet tutors, enjoy a BBQ and find out more about the year ahead. To support our young people as they settle into St Katherine's, Year 7 are led by a Transition Manager. All students belong to one of our four houses; Pankhurst, Stephenson, Turing and Yousafzai. Our houses are named after truly exceptional individuals who inspire us every day.

Pastoral Care

Each child has a tutor who looks after their progress and wellbeing throughout their time at St Katherine's. Siblings join the same house family, overseen by a

Head of House, ensuring continuity of care for each family. Tutors are the first point of contact for parents and carers and will facilitate meetings with other staff members when necessary. The school's tutorial programme and house structure helps students develop study skills, social responsibility, self-confidence and respect for others. Student House Leaders and Tutor Group Representatives regularly lead assemblies and tutor time, showcasing the achievements and contributions of their house.

Parents and carers receive clear, frequent feedback on their child's learning. We deeply value our relationship with home which supports the success and happiness of our students.



Curriculum

We are proud to be a fully inclusive comprehensive school and value every young person within our community. We aim to use our local context and diversity to shape an inspiring curriculum that will enable students to maximise their future choices and opportunities.

We deliver our rich curriculum through high quality, creative teaching. We are passionate that all of our students will leave us as highly literate young people and so prioritise reading in all that we do.

In Years 7-9 students follow the full National Curriculum: English, maths, science, design, art and technology, modern foreign languages, geography, history, philosophy and belief, physical education, music, drama, society and culture, computing and citizenship.

In Years 10-11 we provide the flexibility for students to follow their own direction, and to facilitate further study

Post-16. All students study a core of GCSE subjects: English, maths, science, society and culture and physical education. Students can choose to study four additional subjects: GCSEs or vocational courses. Students are currently able to study GCSEs in: geography, history, French, Spanish, art, music, drama, business, philosophy and belief, computing, food preparation and nutrition and photography. All students study either double award science or triple award science. Vocational courses are offered in health and social care, sport and engineering.







Co-curricular

Our belief is that secondary education is not only academic but a time to develop life skills, character and knowledge outside of the classroom.

All students experience enrichment activities throughout Years 7-9. Alongside enrichment, sport is in our DNA, so we actively encourage all students to take part in regular sports clubs. Our performing arts faculty stages spectacular annual whole school productions involving all year groups.

Trailblazers is open to all Year 7 students; they receive: a free instrument, thirty half-hour group lessons with an expert teacher at a heavily discounted price and membership of a dedicated weekly ensemble - a great experience.

Most students take part in the Duke of Edinburgh Award Scheme at bronze, silver and gold level to challenge themselves and to develop their skills and interests.

Fieldwork days and residential trips for Years 7 to 12 offer students the chance to enrich their classroom learning with 'on the ground' study.

We recognise student engagement in co-curricular activities annually through the St Katherine's Youth Awards - SKYwards.

We prioritise reading. Our library is a quiet space for students to browse some of the very best literature published for young people, complete homework or play a game of chess with a friend. There are books to suit as wide an age and interest range as possible, as well as fantastic book-related activities and events to inspire.



Post 16

Many of our students choose to stay in our Sixth Form, which is a small, community-focused environment.

We offer a wide range of course options to support future pathways, all taught to an exceptional standard by our experienced Sixth Form teachers.

Our Sixth Form inspires students by promoting a love of learning and independent inquiry. It aims to equip students with the necessary skills to continue onto further/higher education, training or employment.

Our tailored careers, information, advice and guidance is designed to ensure that our students pursue pathways that lead to success beyond the Sixth Form.

Sixth Form students access their learning on Chromebooks or laptops and use Google classroom to enrich their understanding and collaborate on projects.

Student Leadership Team roles offer students valuable leadership and management experience. We work with a wide range of partners to provide enrichment beyond the classroom including the Sutton Trust Summer Schools, Access to Bristol, Heading Higher Passport, Realising Opportunities and Pathways to Law and Health Sciences. These valuable experiences help students set themselves apart from other applicants when pursuing employment, apprenticeships or higher education opportunities.





We hope we have given you a flavour of life at St Katherine's.

Why not take the time to visit us and find out for yourself the great education we can offer your child? We look forward to welcoming you soon.







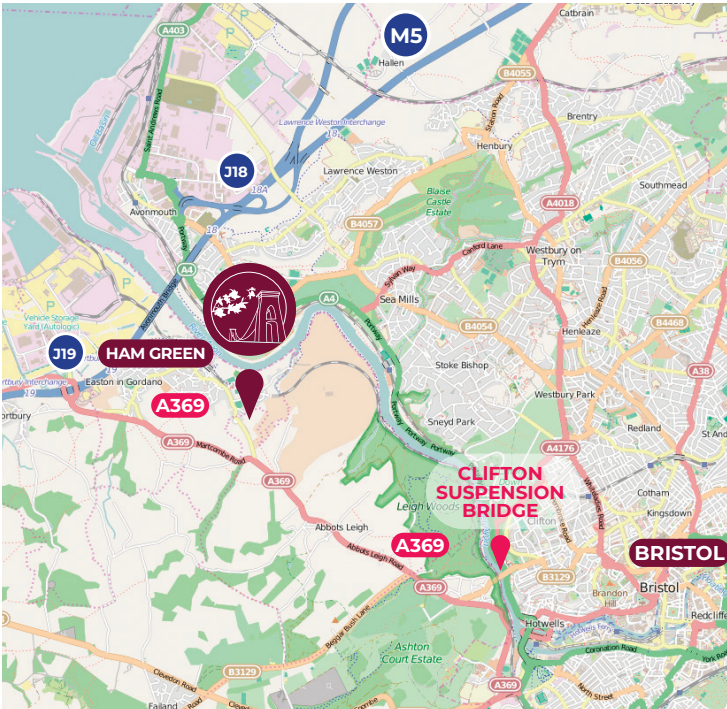
St Katherine's School
Ham Green
North Somerset
BS20 0HU

Telephone 01275 373737

Email school@skdrive.org
Web www.stkaths.org.uk

 St Katherine's School

 @stkathsschool



Only 2.9 miles from the Clifton Suspension Bridge to St Katherine's School, or 7 minutes by car.

We run eight buses to St Katherine's from across Bristol, providing safe and reliable transport to and from school each day.

Directions from the Clifton Suspension Bridge:

Travelling west, take the B3129 Bridge Road, turn right onto the A369 Abbots Leigh Road, straight on at the traffic lights on the A369 Pill Road. After 2.5 miles turn right at the sign for Ham Green, Pill Road. St Katherine's School is on your right.

Directions from the M5 Junction 19:

Take the A369 Martcombe Road towards Pill, turn left at the sign for Ham Green into Pill Road, St Katherine's School is on your right.

